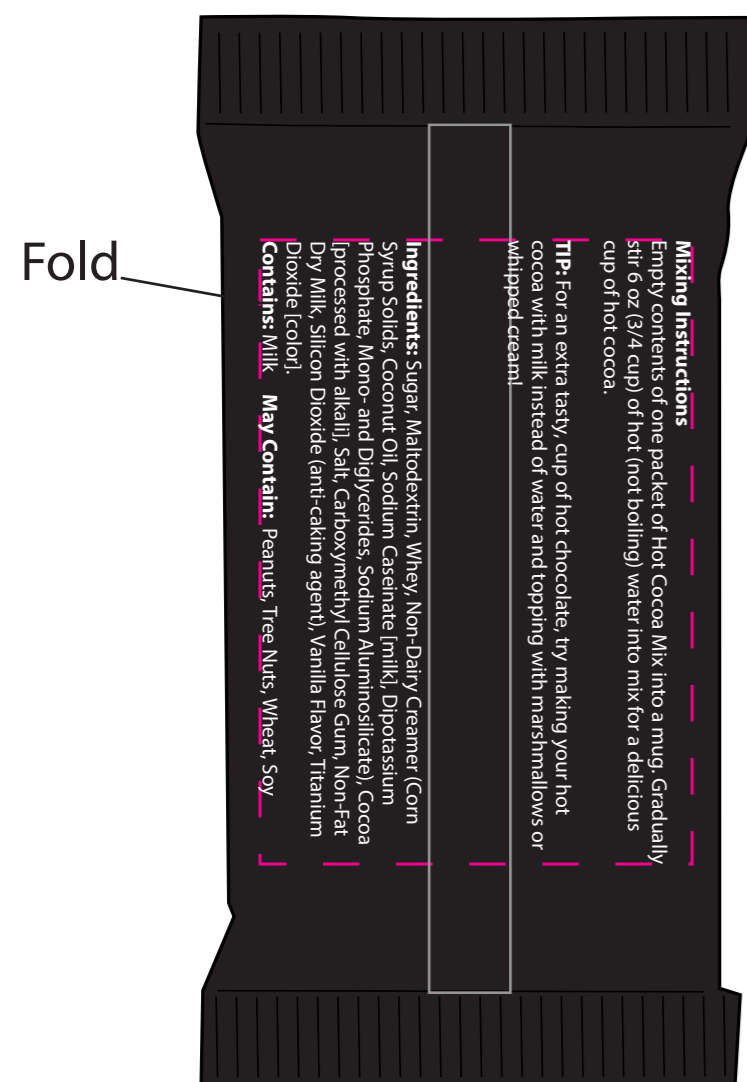


Please proof with this

BACK



CF110

Libation

Hot Chocolate Bag



Ingredients: Sugar, Maltodextrin, Whey, Non-Dairy Creamer (Corn Syrup Solids, Coconut Oil, Sodium Caseinate [milk], Dipotassium Phosphate, Mono- and Diglycerides, Sodium Aluminosilicate), Cocoa (processed with alkali), Salt, Carboxymethyl Cellulose Gum, Non-Fat Dry Milk, Silicon Dioxide (anti-caking agent), Vanilla Flavor, Titanium Dioxide [color].

Contains: Milk **May Contain:** Peanuts, Tree Nuts, Wheat, Soy



Mixing Instructions
Empty contents of one packet of Hot Cocoa Mix into a mug. Gradually stir 6 oz (3/4 cup) of hot (not boiling) water into mix for a delicious cup of hot cocoa.

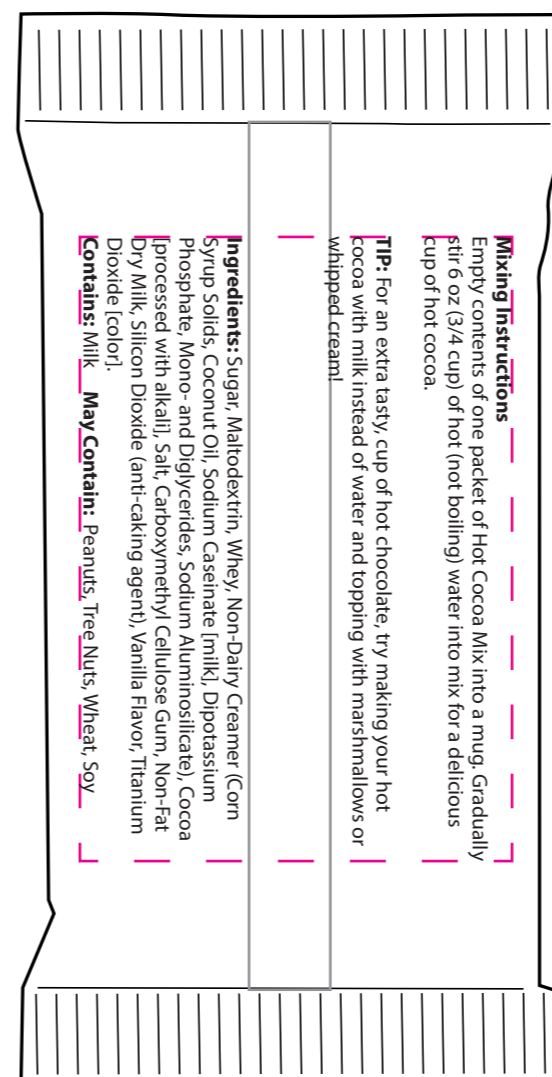
TIP: For an extra tasty, cup of hot chocolate, try making your hot cocoa with milk instead of water and topping with marshmallows or whipped cream!

CF110

Item Size: 2 3/4" w x 4 1/2" h
 Max Imprint Area: 2 1/4" w x 3 1/4" h
 Back Imprint Area: 3.25" w x 1" h
 Imprint Color(s):
 Imprint Method: **Flexo**
 Die # (If Applies): 16
 (76T, 2AR HORIZONTAL Repeat, No Gap.)

BACK

Art To Face This Way



Fold

CF110

Libation

Hot Chocolate Bag

Please proof with this



Ingredients: Sugar, Maltodextrin, Whey, Non-Dairy Creamer (Corn Syrup Solids, Coconut Oil, Sodium Caseinate [milk], Dipotassium Phosphate, Mono- and Diglycerides, Sodium Aluminosilicate), Cocoa (processed with alkali), Salt, Carboxymethyl Cellulose Gum, Non-Fat Dry Milk, Silicon Dioxide (anti-caking agent), Vanilla Flavor, Titanium Dioxide [color].

Contains: Milk **May Contain:** Peanuts, Tree Nuts, Wheat, Soy



Mixing Instructions
Empty contents of one packet of Hot Cocoa Mix into a mug. Gradually stir 6 oz (3/4 cup) of hot (not boiling) water into mix for a delicious cup of hot cocoa.

TIP: For an extra tasty, cup of hot chocolate, try making your hot cocoa with milk instead of water and topping with marshmallows or whipped cream!

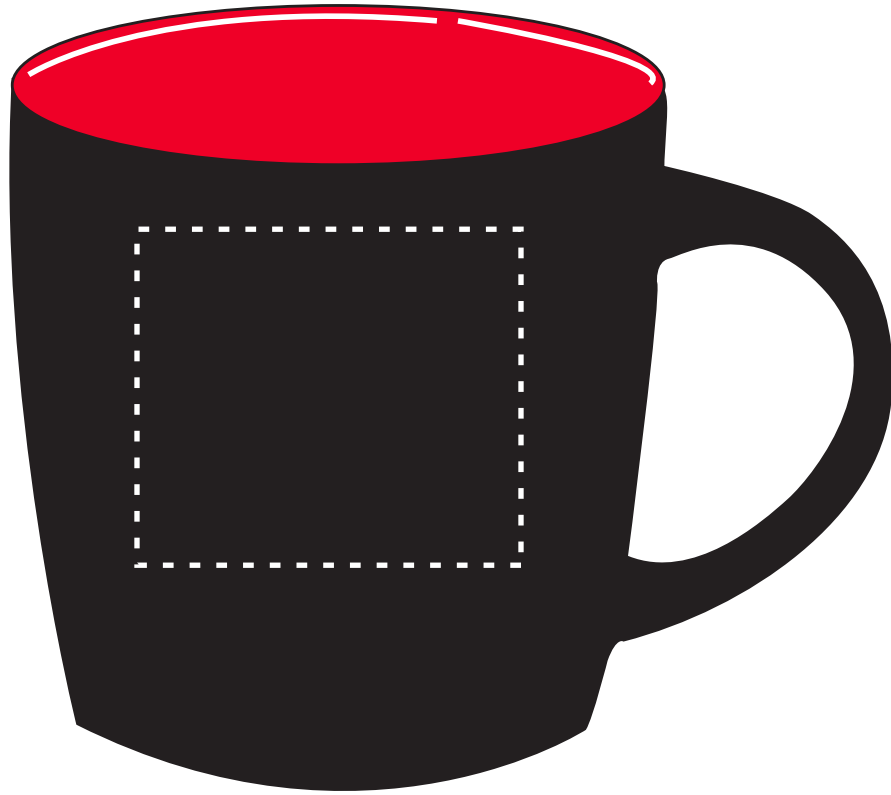
CF110

Item Size: 2 3/4" w x 4 1/2" h
 Max Imprint Area: 2 1/4" w x 3 1/4" h
 Back Imprint Area: 3.25" w x 1" h
 Imprint Color(s):
 Imprint Method: **Flexo**
 Die # (If Applies): 16
 (76T, 2AR HORIZONTAL Repeat, No Gap.)

Art To Face This Way

DRK660

Roulette



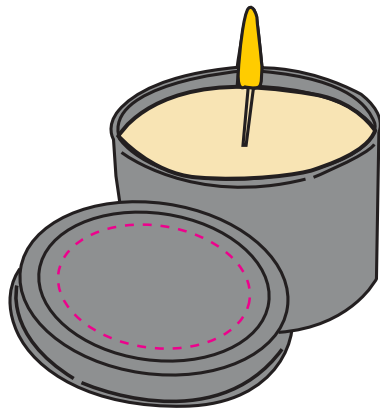
ARTWORK AT 100%

DRK660

Item Size: 5"W x 3.375"H

Max Imprint Size: 2"W X 1.75"H

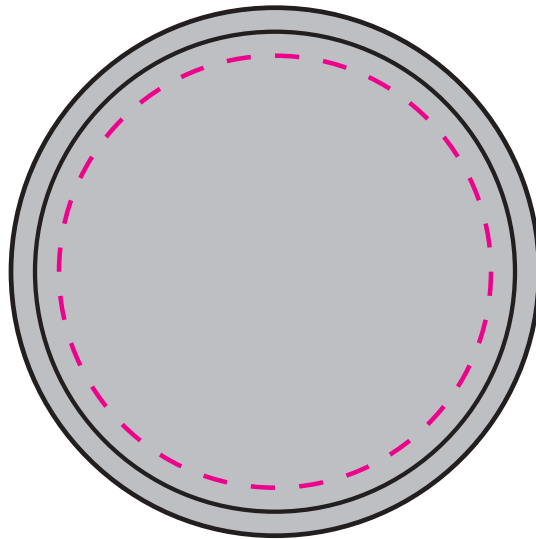
Imprint Method: **Silkscreen**



CW4100

Tall Essence

6Oz. Aromatherapy
Wax Candle



ART AT 100%

CW4100

Item Size: 1.75" H x 2.75" D

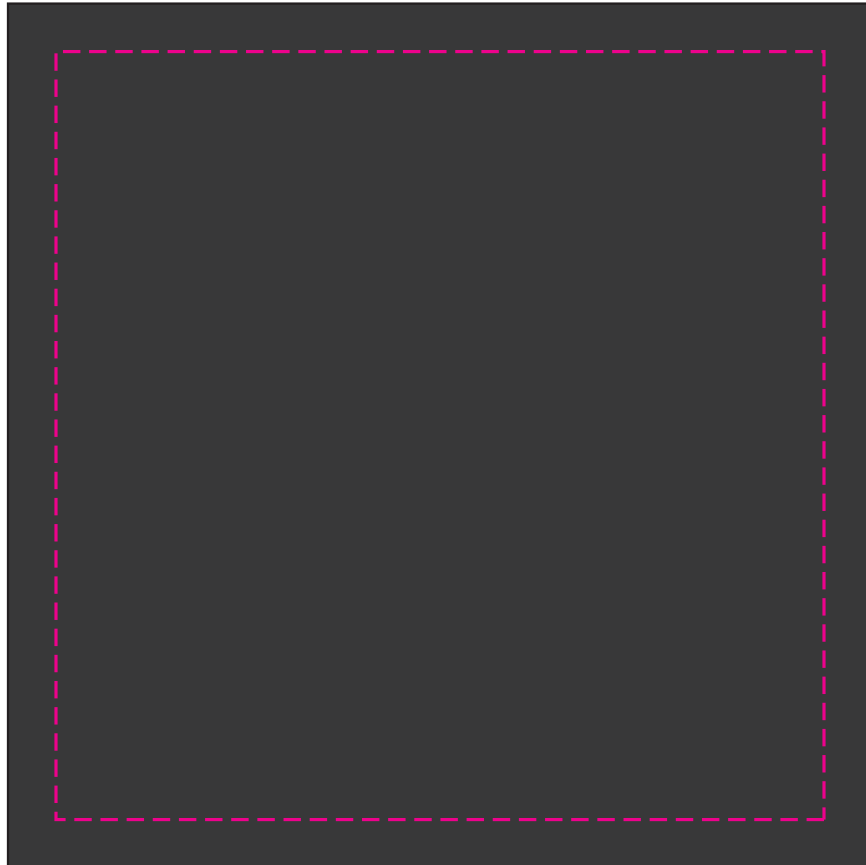
Max Imprint Area: 2.25" Diameter

(Indicated By Dotted Line, Does Not Print)

Imprint Method: Silkscreen

DRB5050

Soft Touch Gift Box



Artwork @ 100%

Item# DRB5050

Item Size: 4 1/2" L x 4 1/2" W x 4 1/4" H

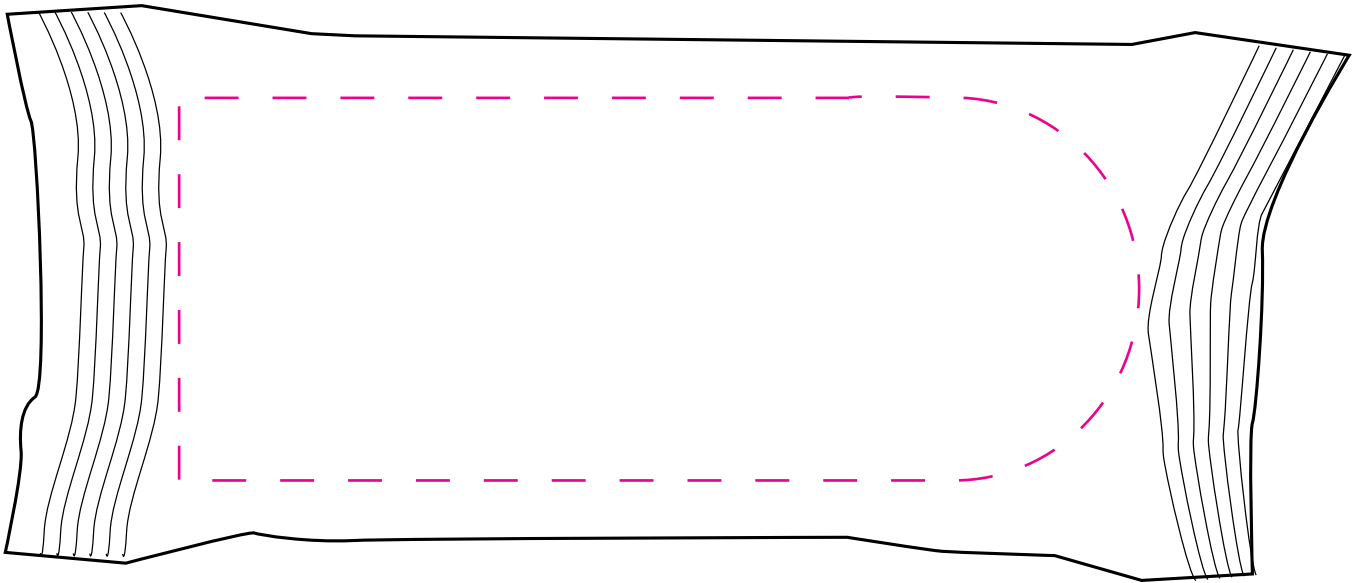
Max Imprint Area: 4" W x 4" H (Indicated by Dotted Line - Does Not Print)

Imprint Method: HOTSTAMP

CF 110

Libation

Hot Chocolate Bag



Item# CF110

Item Size: 3" W x 7" H

Max Imprint Area: 2" W x 5" H (Indicated by Dotted Line - Does Not Print)

Imprint Method: 4CP LABEL

PROOF #1

MAGENTA DASHED LINE
WILL NOT CUT OFF IMPRINT

Art Proof

<input type="checkbox"/> Proof Approved <input type="checkbox"/> Approved with Changes <input type="checkbox"/> Proof Not Approved Signature: _____ Date: _____	
---	--

Artist Comments: Please Review Carefully